



Novakov Energy  
Consulting



**BRYZOS**



## **BULETIN 1**

### **COMPETITIONS FOR TARNOVO CUP 2025**

### **END TSAREVETS SPRINT CUP**

**Organiser** SCO THREE HILLS CLUB

**Organising Committee**  
Competition Director - Danita Kartalova  
Technical directors - Georgi Kartalov  
Event controller - Ivailo Ivanov  
Event secretary - Dimitrichka Karachorova  
SportIdent - Milen Marinov  
Technical team - Todor Pedev  
Final - Mihail Savakov  
Start - Janko Jankov

**When and Where** 14 - 16 March (Friday, Saturday, Sunday) 2025 - 3 days, 4 starts

**Program** Event center - Final arenas for every day

**14 March 2025**  
**(Friday)**

**17:30** - The Secretariat will open at the final  
GPS 43°04'53.0"N 25°38'18.6"E

**18:45** - start M W 12

19:00 - start Night O Prolog

**15 March 2025**  
**(Saturday)**

**09:00** - The Secretariat will open at the final  
for 1 sprint GPS - 43°03'46.3"N 25°36'04.9"E

**10:45** Start - Sprint+ Middle distance 1

Final arena 2 start

GPS - 43°04'14.8"N 25°36'13.7"E

15:30 Start - Sprint distance 2

17:30 Prize-giving ceremony

**16 March 2025**  
**(Sunday)**

**09:00** - The Secretariat will open at the final

**Final arena** GPS - 43°13'13.4"N 25°36'44.1"E

11:00 - Start - Long sprint distance Tarnovo Cup

13:30 - Prize-giving ceremony

### Technical Information

<b>Technical Information</b>	Night O - 14 March 2025 (Friday) GPS 43°04'53.0"N 25°38'18.6"E
<b>Map</b>	Map "Tarnovo Center" scale 1:4000 x - 2.5 m. The map was made to ISSprOM-2 2019. According to the standards of the JOF. Updated February 2025 by Georgi Kartalov. The descriptions will be printed on the front of the map. There will be no additional at the start. Size of the map sheet - A 4. From flat to heavily rugged terrain, urban and park areas with numerous stairs, narrow streets - mostly with stone pavement (cobblestones)
<b>Start Interval</b>	1, 2 minutes
<b>Other information</b>	Event Center - Final - 0 km Final - Start - 600 m Last Control - Final - 30 m.

### Courses information

Class	Length	CP	Climb
Open 1 (M20, M21, M35)	2200	14	125
Open 2 (W20, W21, W35, M40, M45)	2000	13	105
Open 3 (W40, W45, M50, M55)	1800	12	95
Open 4 (W 14, W50, W55, M14, M60, M65)	1700	11	85
Open 5 (W16, W18, M16, M18)	1600	10	75
Open 6 (W12, W60, W65+, M12, M70, M 75+)	1250	9	50

### Part of map



**Technical Information** Sprint+ Middle distance 1 start - 15 March 2025 (Saturday)  
43°03'46.3"N 25°36'04.9"E

**Map**

Cholokovtzi - Gorski stadion, scale 1:5000 x-2.5m(5)  
The map is made to IOF standards by Georgi Kartalov and  
The descriptions will be printed on the front of the map.  
Separately, there will be at the start. Size of the map sheet - A 4.  
The cards map printed on waterproof paper.  
From flat in the urban part of the map to strongly intersected with  
round terrain. On certain parts of the map there is an abundance of  
stones, rock slopes and rock formations in places reaching up to 15  
meters! Highly developed - there are roads and paths of all categories.  
Park and inter-block spaces. Mostly low-passable. Deciduous hornbeam  
forest, in some places pine plantations that are 100% impassable. 30%  
open areas. Poor in water bodies.

**Start Interval**

1-2 minutes

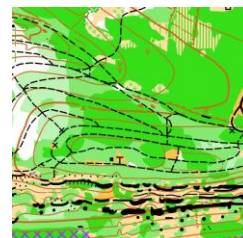
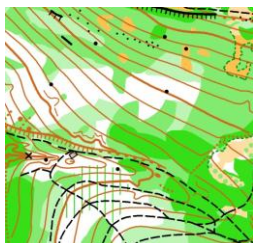
**Other information**

Event Center - Final - 0 km  
Final - Start - 10 m  
Last Control - Final - 30 m.

Courses information

Class	Length	CP	Climb	Class	Length	CP	Climb
M10	800	6	10	Ж10	800	6	10
M12	1900	11	60	Ж12	1800	11	60
M14	2800	12	85	Ж14	2500	13	85
M16	3700	17	135	Ж16	3300	17	110
M18	3900	19	145	Ж18	3700	17	135
M21	4200	21	165	Ж21	3900	19	145
M35	3900	19	145	Ж35	3700	17	135
M45	3700	17	135	Ж45	3300	17	110
M55	3300	17	110	Ж55	2500	13	85
M65	2800	12	85	Ж65	2100	12	35
M75	2100	12	35				
Open 1	1800	11	60	Open 2	2500	13	85

Part of map



**Technical Information** Sprint distance 2 start - 15 March 2025 (Saturday)  
GPS - 43°04'14.8"N 25°36'13.7"E

**Map** "Pishmana-Sports School" Scale 1:4000 X-2.5m. The map is made to the IOF standards for sprints disciplines ISSprOM-2 2019 by Georgi Kartaloff - February 2025 The map are printed on waterproof paper. Multiple stairs, tunnels and inter-block

**Start Interval** 1 min.

**Other information** Event Center - Final - 0 km  
Final - Start - 20 m  
Last Control - Final - 30 m.

The start of the 10-year-olds is near the final! You run with a map, the markings go around!

### Courses information

Class	Length	CP	Climb	Class	Length	CP	Climb
M10	600	6	5	W10	600	6	5
M12	1400	12	15	Ж12	1400	12	15
M14	2100	14	30	Ж14	1800	13	20
M16	2600	16	30	Ж16	2100	14	30
M18	3100	20	40	Ж18	2600	16	30
M21	3300	21	40	Ж21	3100	20	40
M35	3300	21	40	Ж35	2600	16	30
M45	3100	20	40	Ж45	2100	14	30
M55	2600	16	30	Ж55	1800	13	20
M65	1800	13	20	Ж65	1600	12	15
M75	1600	12	15				
Open 1	1400	12	15	Open 2	1800	13	20

### Part of map



**Technical Information** Long sprint distance 3 day - March 16, 2025 (Sunday)  
GPS - 43°13'13.4"N 25°36'44.1"E

**Map** Nicopolis Ad Istrum, Scale 1:4000 x - 2.5m. The map is made according to ISSprOM-2 2019 IOF standards by Georgi Kartalov October 2024 - March 2024. The description will be printed on the front. Separately, there will be at the start. Card size - A4. Waterproof paper. Mostly flat, in some places medium hilly terrain. There are stones and rock formations - part of the ancient city. Poor on the road network. Roads and paths of high categories predominate. Vegetation varies in all categories, mainly open and semi-open areas. Poor in water bodies.

**Start Interval** 1, 2 minutes

**Other information** Event Center - Final - 0 km  
Final - Start - 0 m - marked route from the final  
Parking - Start - 600 m - marked route  
Last Control - Final -30 m.  
The start of the 10-year is at the final!  
There will be a buffet at the final!

### Courses information

Class	Length	CP	Climb	Class	Length	CP	Climb
M10	700	5	0	Ж10	700	5	0
M12	1400	16	5	Ж12	1400	14	5
M14	2300	22	10	Ж14	1700	19	5
M16	2500	25	15	Ж16	2400	24	15
M18	2850	28	20	Ж18	2600	24	15
M20	3100	30	20	Ж20	2850	28	20
M21	3250	33	20	Ж21	3250	33	20
M35	3250	33	20	Ж35	3100	30	20
M40	3100	30	20	Ж40	2850	28	20
M45	3100	30	20	Ж45	2600	24	20
M50	2850	28	20	Ж50	2500	25	15
M55	2600	24	15	Ж55	2400	24	15
M60	2400	24	15	Ж60	2300	22	10
M65	2300	22	10	Ж65	1700	19	5
M70	1700	19	5	M75	2450	12	95
Open 1	1400	14	5	Open 2	2300	22	10

Part of map



ОБЗОРНИ СХЕМИ И ПОВЕЧЕ ПОДРОБНОСТИ  
ОЧАКВАЙТЕ В БЮЛЕТИН 2



**Payments**

Those who want to receive an invoice for the entry fees should send the money to our bank account. You can also pay in cash after arrival.

Here is the bank account where you can transfer your entry fees.

ACCOUNT OWNER:  
SCO TRITE HULMA BANK:  
Allianz Bank Bulgaria  
BANK OFFICE: Veliko Turnovo  
IBAN: BG45BUIN95611000669741  
BIC: BUINBGSF

<https://www.facebook.com/threehillsclub>